



MURU
.....
Industries Pty Ltd

CAPABILITY STATEMENT 2023

LET'S MAKE THE JOURNEY TOGETHER

Reliable and quality trade services across
Greater Sydney and the South Coast.

Proudly Indigenous and family owned.



MURU
Industries Pty Ltd

Muru Industries acknowledges and pays respect to the Traditional owners of this Great Land we call home, Australia. We acknowledge all Aboriginal and Torres Strait people for their continuing care for and connection to land, sea and community. We pay our respects to them and to Elders past, present, and emerging.

Always was. Always will be Aboriginal land.

AT MURU INDUSTRIES, WE BRING VALUE AND PROFESSIONALISM TO CONSTRUCTION AND TRADES SERVICES.

Our young company has experience beyond its years, and this shows in the high level of customer service we deliver.

Leveraging off a long construction career, our founder Peter Lett, a Muruwari/ Yuin man, has industry insight that benefits our clients greatly. We provide practical solutions. We make your job of delivering on projects very easy. We embrace opportunities, knowing there is so much more to our journey...

MEANING PATH OR JOURNEY IN THE DHARAWAL LANGUAGE.

Our path in business is not ours alone. We have the privilege of building valued relationships with our clients, our employees, and our greater community. Sharing the journey is important to us, as is our strong desire to empower and support everyone we meet along the way.



OUR STORY

OUR STORY SERVES TO CONNECT US WITH OUR CUSTOMERS AND OUR COMMUNITY. A CONNECTION THAT WE VALUE AND NURTURE.

Peter Lett is at the centre of our story. He is husband to Katie and together Peter and Katie are parents of seven. The family is the essence of Muru.

As our founder and managing director, Peter brings experience and leadership to Muru that inspires us to grow and continually improve. Peter has a background working in construction, which benefits our customers in so many ways. It raises his awareness of on-site needs and has entrenched his dependable work ethic.

Clint Braddick partners with Peter to lead the provision of civil concreting services at Muru. Clint brings 15 years of experience in concreting to the role, and an ability to manage complex projects with success. He has worked extensively across the South Coast and Greater Sydney areas.

The Muru story extends well beyond service delivery to building capabilities and offering future generations opportunities and life skills to have a positive impact on shaping the ever-evolving contemporary culture and customs within their communities.



**We are Supply Nation certified
and proud to play our part in
making a more inclusive economy.**

OUR STORY IN ART

CREATED BY RHONDA SAMPSON,

a proud Kamilaroi woman and contemporary Aboriginal artist, our artwork tells the story of Muru and presents us as a business with family at our core.



OUR SERVICES

CIVIL CONCRETING

Our experience spans projects across every scale.

- » From road culverts to base slabs, bridges and more
- » We work with urgency on every task
- » We never compromise on quality
- » Rely on us to get the work done on time

We can work with you to design and find the right solution for your needs, or we can work to a plan and get in and get the job done. Either way, we're committed to providing a safe work environment and the highest quality outcome.

SKIP BIN HIRE & REMOVAL

We cover all aspects of skip bin hire across greater Sydney.

- » Skip bins sized from 2m³ to 8m³
- » Informed advice on the right size bin for your purpose
- » Same day delivery if ordered before 9am Monday to Friday
- » 3-5 day standard hire terms, with shorter or longer terms if needed
- » Reliable delivery direct to site with a modern fleet of trucks

Our drivers are skilled to safely place the skip bin on any site, in the best location for you.

All our orders start by having a simple conversation, getting to know what you need.

CONTRACTUAL ADMINISTRATION

Our team can assist with your contractual administration of your project, big or small.

We can assist with the following:

1. Requests for information;
2. Variation requests;
3. Notice of delays;
4. Extension of time requests;
5. Requests for instructions/directions;
6. Payment claims; and
7. Early warnings

It is important to establish the appropriate time frames for the above as some forms of contracts have specific time constraints with the submission of the above. Some contracts necessitate the role of contracts administrator/superintendent, to determine the above claims. A competent contract administrator is fair and reasonable, determining claims within the prescribed times, potentially diverting disputes from crystallising, by providing robust determinations.

We can assist with contract administration, including by undertaking it ourselves or training our clients to undertake it 'in house'.

BROADER CAPABILITY

Meeting promises and exceeding expectations.

Whether our work is centred on civil concreting, waste management logistics or another trade, our service is centred on integrity.

- » We are quick to respond.
- » We provide qualified advice.
- » We fulfil our orders on time and as expected.
- » We offer competitive prices.

OUR FUTURE

Muru today is the result of more than 20 years of hard work in logistics, waste management and construction. Our skills, networks, strengths, and knowledge have grown. What we've gained is the capability to provide a broader range of construction services.

We're already open to conversations about how we can help you with these extended services. Yarn with us to find out more and be part of our continued journey.

THE MURU OF TOMORROW LOOKS LIKE THIS:

- » WASTE MANAGEMENT
- » FACILITY SERVICES
- » PLUMBING
- » ELECTRICAL
- » CIVIL SERVICES
- » TRADE AND LABOUR HIRE
- » PROCUREMENT
- » CONSULTATION
- » CONTRACTUAL ADMINISTRATION



OUR VALUES

The Muru values shine through in every action and interaction.

Honesty . Integrity . Generosity
Ingenuity . Respect . Inclusion

OUR VISION

To be a leader in the provision of logistics and waste management services and, through our work, to give back to the wider community and empower everyone who shares our journey.

OUR CUSTOMER SERVICE PROMISE

To serve everyone with the same commitment to excellence and to treat every transaction as part of a journey to help clients find success.

OUR CLIENTS

We work with clients across many different industries. These are some examples.

- » Construction and development
- » Offices and commercial buildings
- » Industrial and manufacturing
- » Retail and shopping centres
- » Health care and medical centres

Some of our clients are homeowners and contractor builders or landscapers, and some of our clients are large businesses and companies. We embrace inclusivity and opportunities, and we are always ready to welcome other individuals or businesses to join us on our journey.



OUR COMMUNITY

As a family-owned, Indigenous business, we have proudly built a close, inclusive community of employees, customers, and industry partners.

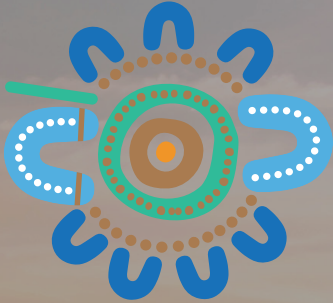
We also take pride in our role within the Indigenous and wider communities. It is our honour to support and give back to these communities through our work.

We make a difference by creating employment opportunities, supporting charitable organisations, and, as a Supply Nation certified business, showing leadership in the Indigenous business sector.

OUR CARE FOR THE LAND

Our waste management services go hand in hand with caring for the land. Our actions always show consideration for the future of our planet.





MURU

Industries Pty Ltd

**LET'S HAVE
A YARN & START
OUR JOURNEY
TOGETHER**

0429 520 747

yarning@muru.com.au